

كندا CANADA



THE COUNTRY – A FEW INTERESTING FACTS

- Canada's educational institutions have long been the catalysts for world-class innovations such as the BlackBerry, flat screen technology, SMART boards, and IMAX film among others.
- The country is also known for its cost-effective yet high standard of living, which has ensured it a place among the top 10 countries in the United Nations Quality of Life Index since 2004.
- Although English and French are the two official languages, more than 200 foreign languages are spoken in Canada. This is reflective of the multicultural population and a very welcoming attitude towards people coming from abroad.
- Canada is home to 2.4 million caribou and reindeer.



الولايات المتحدة الأمريكية USA



THE COUNTRY – A FEW INTERESTING FACTS

- The UNITED STATES OF AMERICA'S (USA) higher education system stands apart in the flexibility it provides through the number and diversity of types of institutions it encompasses.
- More than 4,500 accredited institutions make up U.S. higher education system and many of these institutions are well-reputed ones.
- The United States is a multi-cultural society, especially on campus! Almost all recommended higher education institutions have a mosque located inside the campus or nearby, while halal food is usually available as well.



STEM (SE380) & ESAM (SE390)

MABROOK! YOU HAVE BEEN SHORTLISTED FOR STEM OR ESAM! NOW COMES THE CRUCIAL PART: DECIDING A MAJOR (COURSE), WHICH WILL SUIT YOUR INTERESTS AND TALENTS. THEN COMES THE INSTITUTION AND THE LOCATION. NOT AN EASY TASK!

SO, TO HELP YOU, here's an exclusive taster of content specifically created for all STEM and ESAM scholarship recipients. Students can find information about a number of higher education institutions in the Sultanate and abroad, while the information about overseas HEIs has been compiled with the help from the CULTURAL ATTACHÉ OFFICES in Washington, London and the CONSULATE-GENERAL in Melbourne.



مبروك! لقد تم ترشيحك لـ STEM أو ESAM! يأتي الآن الجزء الأهم: والذي يتمثل بتحديد البرنامج الدراسي الذي يتوافق مع اهتماماتك ومواهبك، ثم اختيار المؤسسة والواقع إنها ليست بالمهمة السهلة! لذلك و لمساعدتك، تم حصر المحتوى الذي تم إنشاؤه خصيصًا لجميع الحاصلين على منح STEM و ESAM .

يمكن للطلاب العثور على معلومات عن معظم مؤسسات التعليم العالي في السلطنة وخارجها، وقد تم تجميع المعلومات عن مؤسسات التعليم العالي في الخارج بمساعدة مكاتب الملحقية الثقافية العمانية في واشنطن ولندن والقنصلية العامة في ملبورن.

DISCLAIMER: ALL CONTENT following pages has been verified for accuracy at the time of publishing. While we endeavour to keep the information accurate, please do keep in mind all information might be subject to updates. We would suggest that you keep yourself informed of all relevant updates through official MoHERI channels only

* **تنويه:** تم تصديق المحتوى الموجود في هذه الصفحة وذلك من أجل الدقة قبل النشر ونحن إذ نسعى للحفاظ على دقة المعلومات ، فإننا نقوم بتحديث المعلومات وفقا للظروف الراهنة.يرجى الاطلاع على جميع المستجدات ذات الصلة عبر القنوات الرسمية فقط.

مؤسسات التعليم العالي التي أوصى* بها مكتب الملحقية الثقافية العمانية في العاصمة واشنطن لبعثات (STEM & ESAM)

HIGHER EDUCATION INSTITUTIONS IN THE UNITED STATES OF AMERICA AND CANADA RECOMMENDED* FOR STEM (SE380) & ESAM (SE390) BY THE CULTURAL ATTACHÉ OFFICE (CAO IN WASHINGTON D.C. IN THE USA (U.S.)



- STEM - تغطي المنحة الدراسية STEM الدورات الدراسية المؤهلة* التي تشمل العلوم والتكنولوجيا والهندسة و/أو العلوم الرياضية.
- ESAM - تغطي المنحة الدراسية الدورات المؤهلة* التي تدرج في إطار التعليم والمجتمع والثقافة والفنون (الإبداعية) أو الإدارة والتجارة.
- عادة ما تكون بعض برامج الدرجات الجامعية المهنية غير متوفرة على مستوى البكالوريوس في الولايات المتحدة - عادة ما تعدك برامج الدرجات المهنية لمهنة معينة - على سبيل المثال (فكر في مهنة المحامي أو الدكتور)، بينما لا تشمل بعثات STEM أو ال ESAM دراسة الطب. يرجى الرجوع إلى المسؤول والمواقع الرسمية للجامعات الموصى بها
- لمزيد من المعلومات حول مدى توفر تخصصات STEM و ESAM المؤهلة كما هو مدرج في دليل الطالب HEAC، يرجى الاتصال بـ <https://www.culturaloffice.info>

- STEM (SE380) SCHOLARSHIP COVERS COURSES THAT INVOLVE SCIENCE, TECHNOLOGY, ENGINEERING OR MATHEMATICAL SCIENCES
- ESAM (SE390) SCHOLARSHIP COVERS COURSES THAT FALL UNDER EDUCATION, SOCIETY & CULTURE, (CREATIVE) ARTS OR MANAGEMENT (& COMMERCE)
- PROFESSIONAL DEGREE COURSES (SUCH AS LAW) ARE USUALLY NOT AVAILABLE AT UNDERGRADUATE LEVEL IN THE UNITED STATES OF AMERICA
- FOR FURTHER INFORMATION ABOUT THE AVAILABILITY OF YOUR PREFERRED MAJOR(S), PLEASE CONTACT: [HTTPS://WWW.CULTURALOFFICE.INFO/HOMEENGLISH](https://www.culturaloffice.info/homeenglish)

*تنويه: مؤسسات التعليم العالي الآتية موصى بها (تعد مناسبة) من الولايات المتحدة في أمريكا وكندا للباحثين على بعثات STEM و ESAM مع الأخذ بعين الاعتبار بأنه يجب الحصول على الموافقة اللازمة لرغبات الطلاب في الدراسة بجامعة لم تدرج ضمن القائمة إلا أنها معتمدة من قسم معادلة المؤهلات والاعتراف بها بالوزارة.

The following Higher Education Institutions (HEIs) have been recommended (deemed suitable) by the CAO in Washington D.C. for STEM (SE380) and ESAM (SE390) scholarship recipients in the USA. Keep in mind that students wishing to study in a HEI not mentioned in this list but that has been approved by the Ministry's Department for Equivalency & Recognition, will have to seek proper approvals. The recommended HEIs have been listed according to country and their position in rankings used by the CAO.

الولايات المتحدة الأمريكية	الولايات المتحدة الأمريكية
PRINCETON UNIVERSITY /https://www.princeton.edu	CORNELL UNIVERSITY /https://www.cornell.edu
COLUMBIA UNIVERSITY /https://www.columbia.edu	RICE UNIVERSITY /https://www.rice.edu
HARVARD UNIVERSITY /https://www.harvard.edu	UNIVERSITY OF NOTRE DAME /https://www.nd.edu
MASSACHUSETTS INSTITUTE OF TECHNOLOGY /http://www.mit.edu	UNIVERSITY OF CALIFORNIA LOS ANGELES /http://www.ucla.edu
YALE UNIVERSITY /https://www.yale.edu	EMORY UNIVERSITY /http://www.emory.edu
STANFORD UNIVERSITY /https://www.stanford.edu	UNIVERSITY OF CALIFORNIA BERKELEY /https://www.berkeley.edu
UNIVERSITY OF CHICAGO /https://www.uchicago.edu	GEORGETOWN UNIVERSITY /https://www.georgetown.edu
UNIVERSITY OF PENNSYLVANIA /https://www.upenn.edu SCROLL DOWN FOR HEI-CURATED CONTENT EXCLUSIVE TO OMANI STUDENTS, ALONG WITH INFORMATION ABOUT THEIR UNIVERSITY CONNECTION (UNICONN) PREP COURSE	UNIVERSITY OF MICHIGAN ANN ARBOR /https://umich.edu
DUKE UNIVERSITY /https://duke.edu	UNIVERSITY OF VIRGINIA /https://www.virginia.edu
CALIFORNIA INSTITUTE OF TECHNOLOGY /https://www.caltech.edu	CARNEGIE MELLON UNIVERSITY /https://www.cmu.edu
JOHNS HOPKINS UNIVERSITY /https://www.jhu.edu	UNIVERSITY OF SOUTHERN CALIFORNIA /https://www.usc.edu
NORTHWESTERN UNIVERSITY / https://www.northwestern.edu CLICK HERE FOR A VIRTUAL CAMPUS TOUR	TUFTS UNIVERSITY /https://www.tufts.edu
DARTMOUTH COLLEGE /https://home.dartmouth.edu	THE UNIVERSITY OF NORTH CAROLINA AT CHAPEL HILL /https://www.unc.edu
BROWN UNIVERSITY /https://www.brown.edu	NEW YORK UNIVERSITY NEW YORK /https://www.nyu.edu
WASHINGTON UNIVERSITY IN ST LOUIS /https://wustl.edu	UNIVERSITY OF FLORIDA GAINESVILLE /https://www.ufl.edu
VANDERBILT UNIVERSITY /https://www.vanderbilt.edu	WAKE FOREST UNIVERSITY http://www.wfu.edu

الولايات المتحدة الأمريكية

UNIVERSITY OF CALIFORNIA, SANTA BARBARA https://www.ucsb.edu/
UNIVERSITY OF CALIFORNIA, SAN DIEGO https://ucsd.edu/
UNIVERSITY OF ROCHESTER https://www.rochester.edu/
BOSTON COLLEGE https://www.bc.edu/
UNIVERSITY OF CALIFORNIA, IRVINE https://uci.edu/ SCROLL DOWN FOR HEI-CURATED CONTENT EXCLUSIVE TO OMANI STUDENTS
GEORGIA INSTITUTE OF TECHNOLOGY https://www.gatech.edu/
COLLEGE OF WILLIAM AND MARY http://www.wm.edu
UNIVERSITY OF TEXAS AT AUSTIN www.utexas.edu
UNIVERSITY OF CALIFORNIA, DAVIS https://www.ucdavis.edu/
BRANDEIS UNIVERSITY https://www.brandeis.edu/
UNIVERSITY OF WISCONSIN-MADISON https://www.wisc.edu/
CASE WESTERN RESERVE UNIVERSITY https://case.edu/
TULANE UNIVERSITY https://tulane.edu/
BOSTON UNIVERSITY https://www.bu.edu/
UNIVERSITY OF ILLINOIS AT URBANA-CHAMPAIGN https://illinois.edu/
UNIVERSITY OF GEORGIA https://www.uga.edu/
LEHIGH UNIVERSITY http://www1.lehigh.edu
NORTHEASTERN UNIVERSITY https://www.northeastern.edu/ SCROLL DOWN FOR HEI-CURATED CONTENT EXCLUSIVE TO OMANI STUDENTS
OHIO STATE UNIVERSITY https://www.osu.edu/
PEPPERDINE UNIVERSITY http://www.pepperdine.edu
PURDUE UNIVERSITY https://www.purdue.edu

الولايات المتحدة الأمريكية

VILLANOVA UNIVERSITY
RENSSELAER POLYTECHNIC INSTITUTE http://www.rpi.edu
UNIVERSITY OF MIAMI https://welcome.miami.edu/
FLORIDA STATE UNIVERSITY http://www.fsu.edu
SANTA CLARA UNIVERSITY https://www.scu.edu/
UNIVERSITY OF WASHINGTON https://www.washington.edu/
SYRACUSE UNIVERSITY http://www.syracuse.edu
UNIVERSITY OF MARYLAND, COLLEGE PARK https://www.umd.edu/
UNIVERSITY OF PITTSBURGH https://www.pitt.edu/
PENNSYLVANIA STATE UNIVERSITY https://www.psu.edu/ CLICK HERE FOR A VIRTUAL CAMPUS TOUR
GEORGE WASHINGTON UNIVERSITY https://www.gwu.edu/
RUTGERS UNIVERSITY, NEW BRUNSWICK https://www.rutgers.edu/new-brunswick
UNIVERSITY OF CONNECTICUT http://www.uconn.edu
WORCESTER POLYTECHNIC INSTITUTE https://www.wpi.edu/
TEXAS A&M UNIVERSITY, COLLEGE STATION https://www.tamu.edu/



الولايات المتحدة الأمريكية

UNIVERSITY OF MINNESOTA, TWIN CITIES https://twin-cities.umn.edu/ CLICK HERE FOR A VIRTUAL CAMPUS TOUR SCROLL DOWN FOR HEI-CURATED CONTENT EXCLUSIVE TO OMANI STUDENTS
INDIANA UNIVERSITY BLOOMINGTON https://www.indiana.edu/
UNIVERSITY OF MASSACHUSETTS, ARMHERST https://www.umass.edu/
FORDHAM UNIVERSITY https://www.fordham.edu/
VIRGINIA TECH https://vt.edu/
CLEMSON UNIVERSITY http://www.clemson.edu
BAYLOR UNIVERSITY https://www.baylor.edu/
LOYOLA MARYMOUNT UNIVERSITY https://www.lmu.edu/
NORTH CAROLINA STATE UNIVERSITY https://www.ncsu.edu/
BRIGHAM YOUNG UNIVERSITY http://www.byu.edu
AMERICAN UNIVERSITY http://www.american.edu
COLORADO SCHOOL OF MINES http://www.mines.edu
UNIVERSITY OF CALIFORNIA, RIVERSIDE https://www.ucr.edu/ CLICK HERE FOR A VIRTUAL CAMPUS TOUR SCROLL DOWN FOR HEI-CURATED CONTENT EXCLUSIVE TO OMANI STUDENTS
UNIVERSITY OF IOWA https://uiowa.edu/ CLICK HERE FOR A VIRTUAL CAMPUS TOUR
MARQUETTE UNIVERSITY https://www.marquette.edu/ SCROLL DOWN FOR HEI-CURATED CONTENT EXCLUSIVE TO OMANI STUDENTS
MICHIGAN STATE UNIVERSITY https://msu.edu/
BINGHAMTON UNIVERSITY https://www.binghamton.edu/
STEVENS INSTITUTE OF TECHNOLOGY https://www.stevens.edu/
UNIVERSITY AT BUFFALO, SUNY http://www.buffalo.edu/

الولايات المتحدة الأمريكية

UNIVERSITY OF DELAWARE https://www.udel.edu/ CLICK HERE FOR A VIRTUAL CAMPUS TOUR EXCLUSIVE TO OMANI STUDENTS SCROLL DOWN FOR HEI-CURATED CONTENT EXCLUSIVE TO OMANI STUDENTS, ALONG WITH INFORMATION ABOUT THEIR UNI PREP COURSE
UNIVERSITY OF DENVER http://www.du.edu
STONY BROOK UNIVERSITY https://www.stonybrook.edu/
UNIVERSITY OF CALIFORNIA MERCED
UNIVERSITY OF OREGON http://www.uoregon.edu
UNIVERSITY OF COLORADO BOULDER https://www.colorado.edu/
THE UNIVERSITY OF UTAH https://www.utah.edu/
AUBURN UNIVERSITY https://www.auburn.edu
UNIVERSITY OF TENNESSEE – KNOXVILLE https://www.utk.edu
TEMPLE UNIVERSITY https://www.temple.edu CLICK HERE FOR A VIRTUAL CAMPUS TOUR SCROLL DOWN FOR HEI-CURATED CONTENT EXCLUSIVE TO OMANI STUDENTS
UNIVERSITY OF ARIZONA http://www.arizona.edu
UNIVERSITY OF CALIFORNIA, SANTA CRUZ https://www.ucsc.edu/ SCROLL DOWN FOR EXCLUSIVE CONTENT PROVIDED BY THIS HEI FOR OUR OMANI STUDENTS
LOYOLA UNIVERSITY - CHICAGO http://www.luc.edu
DREXEL UNIVERSITY https://drexel.edu/ CLICK HERE FOR A VIRTUAL CAMPUS TOUR
CLARK UNIVERSITY https://www.clarku.edu/
NEW JERSEY INSTITUTE OF TECHNOLOGY https://www.njit.edu/
UNIVERSITY OF ILLNOIS - CHICAGO https://www.uic.edu/
UNIVERSITY OF SAN FRANCISCO https://www.usfca.edu/

الولايات المتحدة الأمريكية

MIAMI UNIVERSITY
/https://miamioh.edu

UNIVERSITY OF SOUTH FLORIDA
/https://www.usf.edu
[CLICK HERE FOR A VIRTUAL CAMPUS TOUR](#)
SCROLL DOWN FOR HEI-CURATED CONTENT
EXCLUSIVE TO OMANI STUDENTS

UNIVERSITY OF VERMONT
http://www.uvm.edu

ROCHESTER INSTITUTE OF TECHNOLOGY
/https://www.rit.edu

ARIZONA STATE UNIVERSITY
/https://www.asu.edu

UNIVERSITY OF SOUTH CAROLINA
/https://www.sc.edu

UNIVERSITY OF KANSAS
/https://ku.edu
SCROLL DOWN FOR HEI-CURATED
CONTENT EXCLUSIVE TO OMANI STUDENTS

UNIVERSITY OF MISSOURI
SCROLL DOWN FOR HEI-CURATED CONTENT
EXCLUSIVE TO OMANI STUDENTS

ILLINOIS INSTITUTE OF TECHNOLOGY
/https://www.iit.edu

CHAPMAN UNIVERSITY
[CLICK HERE FOR A VIRTUAL CAMPUS TOUR](#)

IOWA STATE UNIVERSITY
/https://www.iastate.edu

DEPAUL UNIVERSITY
https://www.depaul.edu/Pages/default.aspx

UNIVERSITY OF DAYTON
/https://udayton.edu

UNIVERSITY OF KENTUCKY
/https://www.uky.edu

UNIVERSITY OF OKLAHOMA
/https://www.ou.edu

UNIVERSITY OF NEW HAMPSHIRE
/https://www.unh.edu

CATHOLIC UNIVERSITY OF AMERICA
http://www.catholic.edu

الولايات المتحدة الأمريكية

UNIVERSITY OF TULSA
http://www.utulsa.edu
SCROLL DOWN FOR HEI-CURATED CONTENT
EXCLUSIVE TO OMANI STUDENTS

UNIVERSITY OF NEBRASKA - LINCOLN
/https://www.unl.edu
SCROLL DOWN FOR HEI-CURATED CONTENT
EXCLUSIVE TO OMANI STUDENTS

DUQUESNE UNIVERSITY
https://www.duq.edu

MICHIGAN TECHNOLOGICAL UNIVERSITY
/https://www.mtu.edu

COLORADO STATE UNIVERSITY
/https://www.colostate.edu
[CLICK HERE FOR A VIRTUAL CAMPUS TOUR](#)
SCROLL DOWN FOR HEI-CURATED CONTENT
EXCLUSIVE TO OMANI STUDENTS

GEORGE MASON UNIVERSITY
/https://www.gmu.edu
[CLICK HERE FOR A VIRTUAL CAMPUS TOUR](#)
SCROLL DOWN FOR HEI-CURATED CONTENT
EXCLUSIVE TO OMANI STUDENTS

UNIVERSITY OF CINCINNATI
/https://www.uc.edu

UNIVERSITY OF MISSISSIPPI
/https://olemiss.edu

SAVANNAH COLLEGE OF ART AND DESIGN
/https://www.scad.edu

EMBRY-RIDDLE AERONAUTICAL UNIVERSITY
/https://erau.edu
[CLICK HERE FOR A VIRTUAL CAMPUS TOUR](#)
SCROLL DOWN FOR HEI-CURATED CONTENT
EXCLUSIVE TO OMANI STUDENTS

BERKLEE COLLEGE OF MUSIC
/https://www.berklee.edu



STEM_EXT (SE380) & ESAM_EXT (SE390) SCHOLARSHIPS

تحذير: برامج الدرجة العلمية (مثل القانون) غير متوفرة عادة لدرجة البكالوريوس في هذا البلد
تنويه: مؤسسات التعليم العالي الآتية موصى بها (تعد مناسبة) كندا للباحثين على بعثات STEM و ESAM
مع الأخذ بعين الاعتبار بأنه يجب الحصول على الموافقة اللازمة لرغبات الطلاب في الدراسة بجامعة لم تدرج
ضمن القائمة إلا أنها معتمدة من قسم معادلة المؤهلات والاعتراف بها بالوزارة.

The following Higher Education Institutions (HEIs) have been recommended (deemed suitable) by the CAO in Washington D.C. for STEM (SE380) and ESAM (SE390) scholarship recipients in CANADA. Keep in mind that students wishing to study in a HEI not mentioned in this list but that has been approved by the Ministry's Department for Equivalency & Recognition, will have to seek proper approvals. The recommended HEIs have been listed according to their position in rankings and other criteria used by the CAO.

UNIVERSITY OF TORONTO
/https://www.utoronto.ca
MCGILL UNIVERSITY
/https://www.mcgill.ca
UNIVERSITY OF BRITISH COLUMBIA
/https://www.ubc.ca
[CLICK HERE FOR A VIRTUAL CAMPUS TOUR](#)
SCROLL DOWN FOR HEI-CURATED CONTENT
EXCLUSIVE TO OMANI STUDENTS
UNIVERSITY OF ALBERTA
https://www.ualberta.ca/index.html
MCMASTER UNIVERSITY
/https://www.mcmaster.ca
UNIVERSITY OF WATERLOO
/https://uwaterloo.ca
UNIVERSITY OF OTTAWA
https://www2.uottawa.ca/en
UNIVERSITY OF CALGARY
/https://www.ucalgary.ca

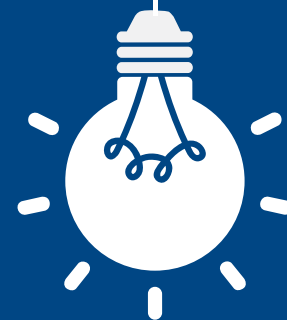
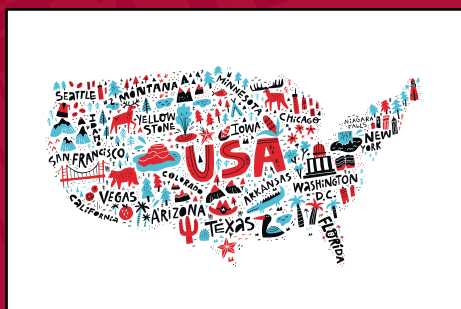
كندا
CANADA

ARE YOU A STEM OR ESAM EXTERNAL (STUDY ABROAD) SCHOLARSHIP STUDENT AND INTERESTED IN STUDYING IN THE UNITED STATES OF AMERICA OR CANADA?

The following questions asked by Omani school students and their parents have been collected, edited and designed by the Takhasussi* team, while the answers are based on those specifically provided by the reputed University of Pennsylvania (UPenn) in the United States of America, as part of sponsored partner content. [CLICK HERE](#) FOR THE ARABIC VERSION OF THIS Q&A.

Q: I HAVE HEARD THAT STEM AND ESAM SCHOLARSHIP RECIPIENTS CAN ENROLL IN A PROGRAM AT THE UNIVERSITY OF PENNSYLVANIA IN THE UNITED STATES OF AMERICA. IS THIS A FOUNDATION PROGRAM?

A: The University Connection (UniConn) program is a preparatory course for prospective international freshmen applicants (i.e. students who have NOT YET made a competitive application to a higher education institution (HEI) offered at the University of Pennsylvania (also known as UPenn) in the United States of America (USA or U.S.) and located in the city of Philadelphia. Do not confuse UPenn with Penn State as this is a different university. The UniConn program, like most pre-session Academic English and Study Skills programs, has been designed to help students (further) improve their academic English language and study skills. However, what makes this program different from most pre-session programs is that students will also learn how to navigate college or university admissions processes and will make complete and competitive applications to recommended HEIs in the United States* primarily. Students enrolled in this program are referred to as freshmen applicants, while 'freshman' stands for the first year of an undergraduate degree at a HEI in the U.S.



DID YOU KNOW?
UPenn is one of the eight very well-reputed Ivy League schools in the United States of America.

'Ivy League' is the name generally applied to eight well-reputed universities in the USA (Brown, Columbia, Cornell, Dartmouth, Harvard, Pennsylvania, Princeton and Yale) that over the years have had common interests in scholarship as well as in athletics.

Stanley Woodward, a New York Herald Tribune sports writer, coined the phrase in the early thirties (1930s).

The UniConn program is a suitable option for high-achieving Omani STEM and ESAM external scholarship students who:

- choose to study in the U.S. or Canada*
- know exactly in which major they would want to specialize
- need to improve their English language and study skills and/or want to pursue their higher undergraduate studies at one of the recommended HEIs in the United States of America but do not yet have an unconditional offer letter (letter of acceptance) in place at the time they are competitively awarded the scholarship by the HEAC system.

* MAKING COMPETITIVE applications to universities in Canada is considered an option but this needs to be aligned with the scholarship rules and regulations as STEM and ESAM students may choose their preferred study destination but only during registration and before they travel. You can contract your administrator or CAO in D.C. for more information.

Q: THIS PROGRAM IS SUITABLE FOR STUDENTS WHO NEED TO IMPROVE THEIR ENGLISH LANGUAGE SKILLS, BUT WHAT IF I AM ALREADY FLUENT IN ENGLISH AND SAT FOR AN SCHOLASTIC APTITUDE TEST (SAT) WHILE IN SCHOOL?

The UniConn program will be tailored to every student's needs. Hence, this program is suitable for those who need to develop their language and study skills, but also for those with stronger English language skills and even decent SAT scores as application deadlines for Fall 2023 semester are typically in December every year.

Q: WILL THIS PROGRAM HELP ME SECURE AN ADMISSION INTO A GOOD UNIVERSITY IN THE UNITED STATES OR CANADA?

During the UniConn course, students will apply to several HEIs in primarily the U.S. and (if allowed) Canada. All targeted HEIs usually have to be recommended by the cultural attaché office (CAO) for the Oman STEM and ESAM scholarship programs. The UniConn coursework will focus on writing application essays and statements of purpose; one-on-one advising session with college and university admissions specialists and workshops on the admissions process. The aim is for students to competitively apply at a balanced list of schools ('school' and 'college' are words interchangeably used for 'university' in the United States), provided they are approved by the Ministry of Higher Education, Research and Innovation (MoHERI) for the STEM and ESAM external scholarship programs. Please bear in mind that neither Oman MoHERI, the CAO in Washington nor UPenn can guarantee that you are able to secure admission into your preferred HEI. Many schools, especially top ranked institutions, may be very competitive. This means that a lot of talented students from around world want to study there, while they have limited places available, and the application process can take a significant amount of time and effort.

Q: IF I AM SHORTLISTED FOR A SE380 (STEM) OR SE390 (ESAM) EXTERNAL SCHOLARSHIP IN AUGUST 2022 AND I AM INTERESTED TO ENROLL IN THE UNICONN PROGRAM – WHAT WILL HAPPEN NEXT?

- If you register (with the MoHERI's external scholarships department) as someone who wishes to pursue your studies in the United States and you do not yet have an offer letter in place, the staff members working for the cultural attaché office in Washington in the United States will advise you accordingly about your options.
- If you wish to enroll in the UniConn program, you will have to be specific about your preferred major (e.g. Civil Engineering, Economics, etc., etc. - not just a broader area of study such as 'Engineering' or 'Social Sciences') as you will have to write essays or personal statements to HEIs explaining why you want to study that particular major.
- Certain professional undergraduate degree programs are usually **NOT** available at undergraduate level in the United States - professional degree programs usually prepare you for a specific profession - e.g. think of a Lawyer or a Doctor, while Medicine is **NOT** covered by STEM or ESAM. Please consult your administrator and the official websites of recommended universities.

Q: OK, SO WHAT WILL HAPPEN NEXT ONCE I AM REGISTERED AS A UNICONN COURSE STUDENT AND WHEN WILL I TRAVEL TO THE US?

- You will probably first enroll in an online program and register for a SAT test while you are still in Oman (August*): This online pre-program - Applying to U.S. Universities - is a custom program for Omani scholarship students that will help you be as prepared as possible to start the university application process when you arrive in the U.S.
- The Scholastic Aptitude Test (SAT) is an entrance exam used by many colleges and universities in the U.S. to make admissions decisions. For more information, please visit: <https://www.princetonreview.com/college/sat-information>. You will be required to register for the SAT test before September 1st, 2022, while the date of the actual test will be October 1st, 2022, in Philadelphia, PA.
- WHERE CAN YOU REGISTER? By visiting the following site: <https://collegereadiness.collegeboard.org/sat/register> - register once it has been confirmed by your scholarship provider that you can enroll in the UniConn program. You will have to choose the location of where you will take the test. It is easier by using the following zip code: 19104.
- You are expected* to travel in September and your scholarship administrator in Oman will provide more information about visa application procedures.
- The duration of the UniConn program is one or two semesters. This depends partly on the progress you make and whether you can secure admission to one of the recommended HEIs for Fall or Spring intake. Upon completion of the program, you are expected to progress in to freshman year at the HEI that accepted you. For more information about accommodation in Philadelphia:
 - The Summit at University City (link: <https://www.americancampus.com/student-apartments/pa/philadelphia/the-summit-at-university-city>)
 - University Crossings (link: <https://www.americancampus.com/student-apartments/pa/philadelphia/university-crossings>).

Q: DO I NEED TO SIT ANY OTHER TESTS AND SUBMIT ANY SUPPORTING DOCUMENTS IN ORDER TO ENROLL IN THE UNICONN PROGRAM AT THE UNIVERSITY OF PENNSYLVANIA?

- As mentioned in the HEAC student guide, all external scholarship students are advised to take the IELTS exam to understand your entry level.
- If you are keen on enrolling in the UniConn programme and you believe that you will be able to compete for the STEM and ESAM scholarships enabling you to enroll in the UniConn programme, then you should start arranging for the following documents:
 - A valid English language test report form
 - One set of official school transcripts for Grade 9 - Grade 12 or Year 10 up to Year 13.
 - A recommendation letter from at least one of your school teachers, especially from the instructor of the course relevant to his/her future major (e.g. Maths for Engineering majors, etc., etc.).
 - Visit the websites of the universities (listed in this brochure) if you are not sure about which subjects have been deemed relevant to your preferred major.
 - The recommendation letter should be written in English and should include the following points (show this to your teacher):
 - ✓ Why am I writing this recommendation to this student? What makes him/her unique?
 - ✓ Why do I think this university's benefit would be to accept such a student?
 - ✓ How would that student benefit his/her country when he/she is back after graduation.

For more information, please visit the website of the UPenn: <https://www.elp.upenn.edu/>



*Takhasussi (my major or undergraduate course) is a bilingual website application that, at the time of publishing this resource, is in the process of development and has been EARMARKED to become a future microsite (SUB-SITE) of the Higher Education Admissions Center (HEAC) website (www.heac.gov.om), while HEAC is the centralised admissions service provider in the Sultanate, and part of the Oman Ministry of Higher Education, Research and Innovation (MoHERI). The content of Takhasussi will be partly based on information circulated by HEAC, the DG of Scholarships, CAOs/Consulate-General and other relevant entities.

**** Graduate degree programmes are NOT covered by STEM and ESAM UNDERGRADUATE scholarships, while Medicine, VET and Dentistry are NOT covered by STEM and ESAM in ANY country. Please also note that expected test and travel dates are tentative and might be subject to change(s). Please contact the external UG scholarships department EXTERNALSCHOLARSHIP@MOHERI.GOV.OM for more information.**





FAQS FOR STEM AND ESAM

The following questions asked by Omani school students and their parents have been collected, edited and designed by the Takhasussi* team, while the answers are based on those specifically provided by the University of Delaware in the United States of America, as part of sponsored partner content.

[CLICK HERE](#) TO ACCESS THE ARABIC VERSION OF THIS Q&A.

Q: I HAVE HEARD THAT STEM AND ESAM EXTERNAL SCHOLARSHIP RECIPIENTS CAN CHOOSE TO ENROLL IN A PROGRAM AT THE UNIVERSITY OF DELAWARE IN THE UNITED STATES OF AMERICA. WHAT IS THE NAME OF THIS PROGRAM AND IS THIS A FOUNDATION PROGRAM OR A FRESHMAN YEAR?

A: The STEM/ESAM foundation program at the University of Delaware ELI is a foundation program focused on university admission and preparing you for undergraduate success. The program is designed to introduce you to American university culture, support you in gaining valuable academic study skills, and help you improve your academic English skills. Central to the program is the university admission process. You will explore academic majors and career communities, and learn how to navigate the U.S. university application process. Individual admissions advising ensures a successful, competitive admissions process for each student. Our goal is to help you get admitted to the universities of your choice, and ensure you have a smooth transition to your undergraduate program. Because we are located between the most important cities on the East Coast of the U.S. (2 hours from New York City and Washington, D.C., 1 hour from Baltimore, and just 45 minutes from Philadelphia), visiting prospective universities is very convenient.

Q: IS THIS PROGRAM ONLY SUITABLE FOR STUDENTS WHO NEED TO IMPROVE THEIR ENGLISH LANGUAGE SKILLS? WHAT IF I AM ALREADY FLUENT IN ENGLISH AND SAT FOR AN SCHOLASTIC APTITUDE TEST (SAT) WHILE IN SCHOOL?

A: The STEM/ESAM foundation program is designed specifically for you. This means that whether you are still improving your academic English skills or you are an advanced English language learner, this program will meet your individual needs. You will learn academic English, improve your math, and gain life skills, such as time management, presentation, and research skills, all in a supportive and fun environment on a classic American university campus.

Q: WILL THIS PROGRAM HELP ME SECURE AN ADMISSION INTO A GOOD UNIVERSITY OR COLLEGE IN THE UNITED STATES AND/OR CANADA?

A: Not only will this program help you secure admission into a good American university, it will also help you succeed in your degree. We will begin working with you online, guiding you as you explore university majors and decide the best path for your career. This is followed by our signature Applying to U.S. Universities course which will walk you through the U.S. admissions process, and support you in writing strong, compelling essays, a key component in U.S. university applications. Lastly, you will have personalized advising sessions with an assigned advisor to help you with the application process from beginning to end. STEM/ESAM students are never alone in this process; you have a special program manager and a team who can help you at any time.

Q: IF I ENROLL IN THIS PROGRAM, WHEN WILL I START WITH MY FRESHMAN YEAR?

A: Most STEM/ESAM students apply for admission to undergraduate degree programs that begin in Fall 2023 (August or September intake). Some very advanced students who obtain prior approval from the MoHERI can apply to begin their undergraduate studies in Spring 2023 (January or February intake).

Why Choose UD?

A
"PUBLIC IVY LEAGUE" university

TIER-1

research university in a fun and supportive community

Ranked

TOP 100

among all U.S. universities and

#38

among all public
U.S. universities (U.S. News &
World Report, 2022)

Ranked

TOP 20

in the world for international
student satisfaction (International
Student Barometer)

Ranked

#9

in Colleges with the Best
4-Year Graduation Rate
(Chronicle of Higher Education)

Ranked **#26** safest university
campus in the U.S. (National
Council for Home Safety and
Security)

Located in charming Newark,
Delaware,
the **#17** Best College Town in
America (24/7 Wall Street, 2022),
with one of America's best Main
Streets (Great American Main
Street Awards) and convenient
bus and high-speed train access
to New York City, Philadelphia, and
Washington, D.C.

Q: IF I AM SHORTLISTED FOR A SE380 (STEM) OR SE390 (ESAM) EXTERNAL SCHOLARSHIP IN AUGUST 2022 AND I AM INTERESTED TO ENROLL IN THE ELI PROGRAM – WHAT WILL HAPPEN NEXT?

A: Once you have been shortlisted for STEM or ESAM, and you wish to enroll in UD's Foundation program for STEM/ESAM scholars, you will need to indicate this preference to the MoHERI. Once you are assigned to UD, we will gather your personal information and register you as a student. When we begin this process, you will communicate with our ELI Admissions team to schedule your English language testing and enroll you in classes. You will begin exploring your major and preparing for your IELTS test in a live online class format. If you plan on applying to a very competitive undergraduate program, you should also register for the SAT. During this time we will work with you to issue your I-20 (for your F-1 visa) in a timely manner, and welcome you to campus by mid to late October, just in time for you to see the beautiful fall colors on campus.

Q: DO I NEED TO SIT ANY OTHER TESTS AND SUBMIT ANY SUPPORTING DOCUMENTS IN ORDER TO ENROLL IN THE ELI PROGRAM AT THE UNIVERSITY OF DELAWARE?

A: We will need to see a copy of your passport and a financial guarantee from the MoHERI. Although it is not necessary, if you have recently sat for an IELTS, TOEFL, or Duolingo test, it would be helpful to share those scores with us.

Q: ONCE I AM REGISTERED AS AN ELI STUDENT, WHEN WILL I BE EXPECTED TO TRAVEL TO THE U.S.?

A: You will begin your studies online, but we will work quickly to issue your I-20 so that you can apply for your visa, and we can welcome you to our beautiful campus in October.

Q: CAN I STUDY LAW OR ANY OTHER PROFESSIONAL DEGREE PROGRAMME AT UNDERGRADUATE DEGREE LEVEL IN THE U.S. OR CANADA?

A: Professional degrees like Law, Medicine, Dentistry and Veterinary studies require the completion of a bachelor's degree first**. Architecture, however, is available at both bachelors and professional degree levels.

Q: CAN STUDENTS APPLY TO CANADIAN SCHOOLS WHILE ENROLLED IN ELI?

A: Yes, but you must be approved to study in Canada by the Cultural Attaché in the Ministry. In fact, the ELI will help you with any Canadian applications from beginning to end through the Admissions classes and advising.

Q: SOME MAINSTREAM NEWS AND SOCIAL MEDIA GIVE US REASON TO THINK THAT THE UNITED STATES IS NOT SAFE AND AMERICANS ARE INTOLERANT OF ARABS. HOW IS IT AT THE UNIVERSITY OF DELAWARE?

A: The University of Delaware and the surrounding area is a diverse and welcoming community with people from many backgrounds and religions. Our Arab students feel safe and welcome here. Fatema Alajmni, an Omani graduate (2020) of UD says, "If you want to study, have fun and feel safe at the same time, UD is the perfect place for that." UD becomes a second home for our Omani students.

Q: WHERE CAN I LEARN MORE ABOUT THE ELI AND THE UNIVERSITY OF DELAWARE?

A: Check out the ELI's website at www.udel.edu/eli and the University of Delaware at www.udel.edu. You can explore our 150+ majors at www.udel.edu/majorfinder. Follow our Omani student group on Instagram www.instagram.com/ud_in_oman/ and the ELI at www.instagram.com/udel_eli/. You can find UD Admissions on Twitter at @UDAdmissions. Connect with our Oman Blue Hen Network at www.



***Takhasussi (my major or undergraduate course) is a bilingual website application that, at the time of publishing this resource, is in the process of development and has been EARMARKED to become a future microsite (SUB-SITE) of the Higher Education Admissions Center (HEAC) website (www.heac.gov.om), while HEAC is the centralised admissions service provider in the Sultanate, and part of the Oman Ministry of Higher Education, Research and Innovation (MoHERI). The content of Takhasussi will be partly based on information circulated by HEAC, the DG of Scholarships, CAOs/ Consulate-General and other relevant entities.**

****Graduate degree programmes are NOT covered by STEM and ESAM UNDERGRADUATE scholarships, while Medicine, VET and Dentistry are NOT covered by STEM and ESAM in ANY country. Please also note that expected test and travel dates are tentative and might be subject to change(s). Please contact the external UG scholarships department EXTERNALSCHOLARSHIP@MOHERI.GOV.OM for more information.**

CONTENT SHARED BY HIGHER EDUCATION INSTITUTIONS IN THE U.S. AND CANADA - EXCLUSIVELY TO OMANI SCHOOL STUDENTS*



***A NUMBER OF HIGHER EDUCATION INSTITUTIONS HAVE AGREED TO SHARE AUDIOVISUAL AND/OR EDITORIAL CONTENT EXCLUSIVELY BY OMANI UNDERGRADUATE AND/OR TO OMANI SCHOOL STUDENTS IN THIS DIGITAL BROCHURE, WHICH MAY HELP THE LATTER NAVIGATE THEIR OPTIONS BASED ON REALISTIC EXPECTATIONS. HOWEVER, THE HEAC, CAOS, CONSULATE-GENERAL AND DG OF SCHOLARSHIPS (WHICH ARE ALL PART OF THE OMAN MINISTRY OF HIGHER EDUCATION, RESEARCH AND INNOVATION OR MOHERI) ARE ALL IMPARTIAL, REFRAIN FROM FAVORITISM AND THEREFORE CANNOT ACCEPT ANY LIABILITY FOR ANY (STUDENT AND/OR UNIVERSITY) VIEWS, THOUGHTS, AND OPINIONS EXPRESSED IN THEIR CONTENT.**

CANADA

THE COUNTRY – A FEW INTERESTING FACTS

- Canada's educational institutions have long been the catalysts for world-class innovations such as the BlackBerry, flat screen technology, SMART boards, and IMAX film among others.
- The country is also known for its cost-effective yet high standard of living, which has ensured it a place among the top 10 countries in the United Nations Quality of Life Index since 2004.
- Although English and French are the two official languages, more than 200 foreign languages are spoken in Canada. This is reflective of the multicultural population and a very welcoming attitude towards people coming from abroad.
- Canada is home to 2.4 million caribou and reindeer.



Get to know UBC

THE UNIVERSITY OF BRITISH COLUMBIA

Start here you.ubc.ca/itsyours



GET TO KNOW UBC STUDENTS, ALUMNI, AND FACULTY

See what current students are doing, discover alumni successes, and read about faculty research at you.ubc.ca/ubc_stories

TOURS, EVENTS, AND INFO SESSIONS

Connect with UBC in person to discover whether this is the right place for you to learn, live, and grow. Step foot on one of our two picturesque campuses, attend an event at your own school, meet with an advisor, or immerse yourself in a virtual tour.

you.ubc.ca/tours-info-sessions

APPLYING TO UBC

Your journey to UBC begins with your online application, and we're here to provide you with the information, deadlines, and advice to help you put your best foot forward. Find your general and program-specific requirements, read tips on completing the application, and take note of the online application deadline.

you.ubc.ca/applying-ubc

BUDGETING FOR FIRST YEAR

Most of UBC's bachelor's degrees take four years of full-time study to complete. Review the table below and the online cost calculator at you.ubc.ca/financial-planning/cost to get a sense of your first-year costs.*

TWO CAMPUSES: OKANAGAN AND VANCOUVER



Okanagan: 10,806 undergraduate students

- Kelowna has been rated the top entrepreneurial city in Canada
- 300+ trails and 200 freshwater lakes

Vancouver: 47,400 undergraduate students

- 1st city to be named "Most liveable in the world" five years in a row by The Economist
- 3 local ski hills, 240 parks and green spaces

THE BASICS



TOP 40

research universities in the world



TOP 3

universities in Canada



#1

most international university in North America

ACADEMICS AND RESEARCH



18

faculties



20

schools



45

undergraduate degree programs



260+

program specializations



\$759.1M+

in research funding



31

dual-degree programs



8

Nobel Laureates



74

Rhodes Scholars

A World of Possibilities

Ryerson University is where a world of possibilities collide. It starts with our location in the heart of a global city and runs through every aspect of campus life. Here, you'll experience a diverse and creative community enriched by a multitude of perspectives.



39,000+
undergraduate students

225,000
alumni worldwide

146
countries our students
call home

80+
languages spoken by
students and faculty

60+
bachelor's programs
with 60+ minors

95%
of our graduates are
employed within two
years after graduation

Study

From design and technology labs to science centres, you'll receive the tools and training to explore your potential. Students work alongside faculty and world-class researchers in our 125+ institutes and labs on campus.

Explore our innovative, **career-focused programs**, calculate your **costs**, and apply for **scholarships**.

Student support

International Student Support is here to assist you with your transition – starting with your study permit upon admission, all the way through your undergraduate degree.

Stay connected

- Download the **International Admissions Handbook**
- Take a **Virtual Campus Tour**
- **Email** or book a **virtual meeting** with Dahlia Younan to learn more

Work

95% of our programs have forms of experiential learning, including co-operative education, internships and field placements. **Co-op** allows you to gain up to 20 months of full-time paid professional Canadian work experience related to your program.

Culture & Services for Muslim Students

- **Ryerson Muslim Student Association**
- Prayer Room
- Halal food available on campus
- Five mosques located near campus

USA



THE COUNTRY – A FEW INTERESTING FACTS

- The UNITED STATES OF AMERICA'S (USA) higher education system stands apart in the flexibility it provides through the number and diversity of types of institutions it encompasses.
- More than 4,500 accredited institutions make up U.S. higher education system and many of these institutions are well-reputed ones.
- The United States is a multi-cultural society, especially on campus! Almost all recommended higher education institutions have a mosque located inside the campus or nearby, while halal food is usually available as well.





UD is a nationally & internationally recognized institution of higher learning on the U.S. East Coast.

UD has a long tradition of excellence in teaching, research and innovation. Throughout our history, UD graduates have made important contributions in the U.S. and around the world. Our most famous alumni are U.S. President Joe Biden and First Lady Dr. Jill Biden.

CONVENIENT & WELCOMING NEWARK, DE

From UD, you'll have access to the jewels of American culture and business. The White House, the Liberty Bell, Wall Street, the Metropolitan Museum of Art and the National Mall are just a train or a car ride away.



MAJORS & ACADEMIC INTEREST PROGRAMS

150+ majors | 100+ minors

Alfred Lerner College of Business & Economics

- Accounting* ‡
- Business Analytics* ‡
- Business Undeclared
- Economics*
- Economics Education
- Entrepreneurship
- Finance*
- Financial Planning and Wealth Management
- Global Enterprise Management
- Hospitality Business Management*
- Hospitality Industry Management*
- International Business Studies
- Management Information Systems*
- Management
- Marketing
- Operations Management
- Sport Management

College of Agriculture & Natural Resources

- Agriculture and Natural Resources
- Animal Biosciences ‡
- Animal Science ‡
- Environmental and Resource Economics
- Food and Agribusiness Marketing and Management
- Food Science ‡
- Insect Ecology and Conservation ‡

- Landscape Architecture
- Plant Science ‡
- Pre-Veterinary Medicine
- Statistics* ‡
- Sustainable Food Systems
- Wildlife Ecology and Conservation ‡

College of Arts & Sciences

- Actuarial Sciences* ‡
- Africana Studies*
- Ancient Greek and Roman Studies
- Anthropology
- Anthropology Education
- Applied Mathematics* ‡
- Applied Music – Instrumental/Piano/Voice
- Art Conservation
- Art History*
- Art
- Asian Studies
- Astronomy* ‡
- Biochemistry* ‡
- Biological Sciences* ‡
- Biological Sciences Education
- Chemistry* ‡
- Chemistry Education
- Chinese Studies
- Cognitive Science* ‡
- Communication
- Comparative Literature
- Criminal Justice (includes Law and Society)

- English*
- English Education
- European Studies
- Fashion Design and Product Innovation*
- Fashion Merchandising and Management*
- Fine art
- French Education interest
- French/Political Science
- French Studies
- Game Studies and eSports
- German Education interest
- German Studies
- German/Political Science
- Global Studies
- History Education
- History
- International Relations
- Italian Education interest
- Italian Studies*
- Japanese Studies
- Jazz and Improvisation
- Latin American and Iberian Studies
- Latin Education
- Linguistics*
- Mathematics* ‡
- Mathematics and Economics* ‡
- Mathematics Education*
- Music (includes Music Management Studies)*
- Music Composition
- Music Education – General/Choral/Instrumental
- Music History and Literature
- Music Theory
- Neuroscience* ‡
- Pharmaceutical Sciences interest
- Philosophy
- Physics* ‡
- Physics Education*
- Political Science*
- Political Science Education
- Psychology ‡
- Psychology Education ‡
- Quantitative Biology* ‡
- Russian Studies
- Sociology
- Sociology Education
- Spanish Education interest
- Spanish Studies
- Spanish/Political Science
- Three Languages
- Visual Communications
- Women and Gender Studies

College of Earth, Ocean & Environment

- Earth Science Education
- Environmental Science ‡
- Environmental Studies ‡
- Geography
- Geography Education
- Geological Sciences ‡
- GIScience and Environmental Data Analytics ‡
- Marine Science (includes Marine iology) ‡
- Meteorology and Climate Science ‡

College of Education & Human Development

- Early Childhood Education (includes Special Education)*
- Elementary Teacher Education*
- Human Relations Administration
- Human Services*

College of Engineering

- Biomedical Engineering* ‡
- Chemical Engineering* ‡
- Civil Engineering* ‡

- Computer Engineering* ‡
- Computer Science* ‡
- Construction Engineering and Management* ‡
- Electrical Engineering* ‡
- Engineering Undeclared ‡
- Environmental Engineering* ‡
- Information Systems* ‡
- Materials Science and Engineering* ‡
- Mechanical Engineering* ‡

College of Health Sciences

- Applied Molecular Biology and Biotechnology interest‡
- Exercise Science (includes Biomechanics and Exercise Physiology)
- Health Behavior Science
- Health Sciences – Occupational Therapy***
- Human Physiology‡
- Medical Diagnostics*
- Medical Diagnostics (Pre-Physician Assistant)

- Medical Laboratory Science interest ‡
- Nursing
- Nutrition and Dietetics
- Nutrition and Medical Sciences ‡
- Nutrition
- Sports Health*

Joseph R. Biden, Jr. School of Public Policy & Administration

- Energy & Environmental Policy* ‡
- Organizational & Community Leadership*
- Public Policy*

University Studies Program

- University Studies (undeclared)

* 1+4 option

‡ DHS STEM Designated Degree Program

***A combined undergraduate degree in health sciences and graduate degree in occupational therapy from Thomas Jefferson University.

Learn what majors match your passions at udel.edu/majorfinder

QUICK FACTS

ESTABLISHED

1743

SIZE

Medium

COLLEGES

Agriculture and Natural Resources
Arts and Sciences – home of the English Language Institute
Alfred Lerner College of Business and Economics
Joseph R. Biden School of Public Policy & Administration
Earth, Ocean and Environment
Education and Human Development
Engineering
Health Sciences
Honors College
Graduate College



UD BY THE NUMBERS

#9

U.S. public university four-year graduation rate

Top 100

U.S. universities, U.S. News and World Report, 2022

#38

U.S. News and World Report's Top Public Schools, 2022

12:1

student-faculty ratio

300+

Registered Student Organizations where you can meet people who share your major, your hobbies, your language or your heritage, such as the Middle Eastern Student Association.

"If you want to study, have fun and feel safe at the same time, UD is the perfect place for that."

- Fatema Alajmi, Class of 2020
Major: Statistics



PATHWAY TO BACHELOR'S DEGREE

Academic Transitions at UD's English Language Institute offers an innovative, credit-bearing conditional admission program for students who may not meet our English-language requirements, but want to prepare for undergraduate success without losing time.

To find out more, visit udel.edu/eli/at or contact us at capadmissions@udel.edu



READY TO APPLY?

What you will need:[^]

- Complete one of our applications, either the University of Delaware online application or the Common Application. **Both are found at udel.edu/applytoday**
- Official secondary/post-secondary transcripts and evaluations
- Official English-language test scores*:
 - TOEFL score 79 iBT or better
 - IELTS score 6.5 or better
 - Duolingo English Test score 110 or better
- Letter of recommendation
- SAT and ACT (optional)

[^] International transfer students should refer to specific criteria on our international admissions requirements website.

*Students who do not meet the English requirement are encouraged to start their academic path at the ELI in Academic Transitions.

CONTACT US

Office of Undergraduate Admissions

210 South College Ave., Newark, DE 19716 USA | +1 302-831-8123 | international-admissions@udel.edu

Instagram @UD_in_Oman

Twitter @UDelaware

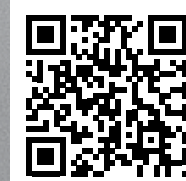
We have an Oman Blue Hen Network for Omani alumni of UD. Learn more at www.udel.edu/alumni-friends/connect/alumni-groups/regional-clubs/oman-blue-hen-network/

The University of Delaware is an equal opportunity/affirmative action employer and Title IX institution. For the University's complete non-discrimination statement, please visit: www.udel.edu/aboutus/legalnotices.html

9/21/TDG

AT TEMPLE YOUR OPPORTUNITIES ARE ENDLESS

Discover 5 Reasons Middle Eastern Students Love Temple



جامعة تمبل رحّبت بي ، هي جامعة مرموقة في فيلادلفيا ، حيث التقيت بأصدقاء من جميع أنحاء العالم. تحسّنت لغّتي الإنجليزية واكتسبت الثقة في نفسي. شعرت كأني في منزلي. كان تكاملي أسرع مما كنت أتخيل. لقد وجدت هدفاً في حياتي.

Farah Rassam

B.S. Biology, Dean's List
International Student Commencement Speaker



عينة من التخصصات المتاحة

Biology

Biochemistry

Business Management

Computer Science

Data Science

Electrical Engineering (Computer)

English Language

Environmental Engineering

Graphic and Interactive Design

Human Resource Management

Information Science and Technology

Industrial and Systems Engineering

Management Information Systems

Public Health

Public Relations

Risk Management & Insurance

To learn more about flexible testing and to apply, see admissions.temple.edu/apply/international-students





Omani Student Success at USF

Colleges at the University of South Florida

- College of Arts and Sciences
- College of the Arts
- College of Behavioral and Community Sciences
- Muma College of Business
- College of Education
- College of Engineering
- Patel College of Global Sustainability
- College of Marine Science
- College of Medicine
- College of Nursing
- Taneja College of Pharmacy
- College of Public Health

Connect with Us

Have questions about your next steps? Schedule a video appointment with our recruitment team.

bit.ly/ConnectUSF



The University of South Florida welcomes Omani students to study at a Top 50 Public University in one of America's leading student destinations! Become career ready at our outstanding colleges:



Business

The Muma College of Business' curriculum prepares it's students for a career through its comprehensive blend of theory and practice.

Available BS/BA degrees:

Accounting, Business Analytics and Information Systems, Entrepreneurship, Finance, Global Business, Hospitality Management, Management, Marketing, Supply Chain Management

Engineering

The ABET accredited College of Engineering provides hands-on classroom learning and innovative research opportunities.

Available BS degrees:

Biomedical Engineering, Chemical Engineering, Civil Engineering, Computer Science/Computer Engineering, Electrical Engineering, Environmental Engineering, Industrial Engineering, Mechanical Engineering



Colleges and Schools at George Mason University

- Antonia Scalia Law School
- Carter School for Peace and Conflict Resolution
- College of Education and Human Development
- College of Engineering and Computing
- College of Health and Human Services
- College of Humanities and Social Sciences
- College of Science
- College of Visual and Performing Arts
- Schar School of Policy and Government
- School of Business

Connect with Us

Have questions about your next step? Email us at intomktg@gmu.edu.

Facebook: facebook.com/INTOMason
Instagram: instagram.com/INTO_Mason
Twitter: twitter.com/INTO_Mason
Linkedin: linkedin.com/school/intomason/

George Mason University welcomes students from the Middle East region to study at the #21 Most Diverse and #18 Most Innovative School. Mason is located in the Washington D.C. area - #13 city for STEM opportunities* in the United States!



Engineering (#86)

Available BS degrees:

Bioengineering, Civil, Environmental, and Infrastructure Engineering, Electrical and Computer Engineering, **Computer Science(#82)**, **Cyber Security Engineering (#28)**, Electrical Engineering, Information Technology, Mechanical Engineering, Statistics, System Engineering.

Health

Available BS degrees:

Health Informatics, Health Administration, Community Health.

Education (#71)

Available BS degrees:

Early Childhood Education for Diverse Learners, Elementary Education, Special Education.

(Creative) Arts

Available BA degrees:

Art and Visual Technology, Film and Video Studies

Society and Culture

Available BA/BS degrees:

Sociology, Environmental and Sustainability Studies Communication (including Journalism), Criminology, Law and Society,

Science

Available BA/BS degrees:

Mathematics, Physics, Astronomy, Biology, Chemistry, Environmental Science, Forensic Science, Geology.

Business (#84)

Available concentrations in Business Program:

Accounting, Business Analytics, Finance, Financial Planning and Wealth Management, Management, Management Information Systems, Marketing, Operations and Supply Chain Management.



Disclaimer:
* according to WalletHub 2022.
All the other school and program rankings are based on U.S. News & World Report 2022.



"If you are a hard worker who wants to learn and live in a beautiful place, George Mason University is for you. Everything you want is here, so take initiative, branch out and make new friends."

Ahmed // Saudi Arabia // Criminology, Law and Society

"INTO provided me with all the necessary courses, guidance and resources to ensure a successful academic transition into my favored major, and has been a great guide in my transition from a cultural standpoint as well."

Rayyan // Oman // B.S. Management

INTO®GEORGE MASON UNIVERSITY

<https://intomason.gmu.edu/>



Omani Students Succeed at Colorado State

Intensive English Program

- Improve writing, reading, speaking skills
- Multiple start dates in Fall, Spring, and Summer
- Basic, Intermediate, Advanced levels
- Most students complete in 1-2 semesters — easily transfer directly to degree program



APPLY FOR FREE



Get info



Connect on Whatsapp



PROGRAMS FOR LEARNING ACADEMIC
AND COMMUNITY ENGLISH
COLORADO STATE UNIVERSITY



Top Undergrad Programs

- Computer/Electrical Engineering
- Chemical and Biological Engineering
- Computer Science
- Data Science
- Business Administration
- Biology
- Psychology
- Agricultural Sciences

\$53,867

average starting salary
for recent graduates.

#67

top public university in the U.S.
U.S. News and World Review, 2022

250+

areas of study
among 8 colleges



Get started: Info about application,
admissions, scholarships & more
col.st/7DC9x



INTERNATIONAL
ENROLLMENT CENTER
COLORADO STATE UNIVERSITY

YOUR JOURNEY AWAITS

UNIVERSITY OF CALIFORNIA
SANTA CRUZ

An inspired, global, public research university leading
at the intersection of innovation and change.

UCSC is approved to host Omani government scholarship students.

EXCEPTIONAL LOCATION

Consistently named one of the world's most beautiful campuses, UCSC is a center of learning, research, and the free exchange of ideas. We are near Monterey Bay, Silicon Valley, and the San Francisco Bay Area – an ideal location for internships and an outstanding quality of life.

INNOVATIVE EDUCATION

UCSC combines the resources and cutting-edge research excellence of a public research institution with the advising support and community feeling of a small liberal arts college.

Undergraduate internships and competitions through connections to Silicon Valley. The Network Management and Operations Lab at the Baskin School of Engineering and Cruzhacks allow students and companies to partner to troubleshoot complex, real-world networking problems.

ACADEMICS

64 undergraduate majors, and **41 minors**,
with access to world-class teachers and facilities.
Visit ucsc.edu/academics

HIGH-IMPACT RESEARCH

- **Producer of the first working draft** of the human genome and home of the UCSC Genome Browser.
- **A leader in cancer genomics** through the Treehouse Childhood Cancer Initiative and involvement in the Stand Up To Cancer Dream Teams, the Cancer Genome Atlas, and the International Cancer Genome Consortium.
- **Headquarters of the University of California observatories**, a managing partner of the world's most scientifically productive optical and infrared telescopes.
- **Award-winning faculty** with honors including the National Medal of Science, Breakthrough Prize in Life Sciences, Benjamin Franklin Medal in Electrical Engineering, Darwin-Wallace Medal, Urey Prize in Planetary Science, Kavli Prize in Astrophysics, and more.
- **Leaders of a research network** using the University of California Natural Reserve System to detect and forecast the ecological impacts of climate change around the world.

SERVICE TO SOCIETY

The Center for Agroecology & Sustainable Food Systems, beginning as a student farm, has grown to train generations of new organic farmers, gardeners, and educators, built a model undergraduate experiential learning program, and helped shape a more sustainable food system through research and policy.

UCSC is a supportive, safe place for you to learn, grow, and thrive with a zero tolerance for any form of hate or bias.



#1 IN THE U.S.

for the publication impact of the
computer engineering Ph.D. program
(The National Research Council).



#3 IN THE WORLD

for research influence, measured by how
often UCSC faculty's published work is
cited by scholars (Times Higher Education).

APPLY TO UCSC

admission.universityofcalifornia.edu/apply-now

October 1: Application opens

November 30: Application Deadline for 2023

MARQUETTE UNIVERSITY

Marquette University is a Catholic, Jesuit university located near the heart of downtown Milwaukee that offers a comprehensive range of majors in 11 nationally and internationally recognized colleges and schools.

A Marquette education prepares students for the world by asking them to think critically about it. Along the way, we ask one thing of every student: BeThe Difference.



Milwaukee,
Wisconsin

8,000
UNDERGRADUATE
STUDENTS

3,500
GRADUATE AND PROFESSIONAL
STUDENTS

1,250
FACULTY



**6TH IN THE COUNTRY
FOR JOB PLACEMENT**

10 YEARS AFTER GRADUATION

ZIPPIA, U.S. DEPARTMENT OF EDUCATION DATA

19TH BEST SCHOOLS FOR INTERNSHIPS

THE PRINCETON REVIEW

**TOP 100
UNIVERSITY**

AS RANKED BY U.S. NEWS & WORLD REPORT

**58
Best Undergraduate
Teaching**

AS RANKED BY U.S. NEWS & WORLD REPORT

1 IN 5

UNDERGRADUATE STUDENTS PARTICIPATES
IN A FACULTY-LED RESEARCH PROJECT

14:1

STUDENT-TO-FACULTY RATIO

**25+ ACCELERATED DEGREE
PROGRAMS***

COMPLETE A MASTER'S DEGREE
IN ONE ADDITIONAL ACADEMIC YEAR WITH PROPER PLANNING

90%

INTERNATIONAL STUDENTS
RECEIVED A MERIT SCHOLARSHIP



**BE THE
DIFFERENCE.**

MARQUETTE UNIVERSITY MAJORS AND MINORS

M—Major, m—Minor

Helen Way Klingler College of Arts and Sciences

Africana Studies M m
Anthropology M m
Applied Mathematical Economics M
Applied Physics M
Biochemistry & Molecular Biology M
Bioinformatics M
Biological Sciences M m
Biophysics M m
Chemistry* M m
Classics M m
Cognitive Science M
Computational Mathematics M
Computer Science M m
Criminology & Law Studies M m
Data Science M m
Economics M m
Environmental Science M
Environmental Studies M m
French M m
Gender & Sexualities Studies M m
German M m
History M m
International Affairs M m A
Latin American Studies M m
Literature M m
Mathematics M m
Middle East and North Africa Studies M m
Military History M
Peace Studies M m
Philosophy M m
Physics* M m
Physiological Sciences M
Political Science* M m
Psychology M m
Social Welfare & Justice M
Sociology M m
Spanish Language, Literature & Culture M m
Spanish for the Professions M m

Statistical Science M
Theology and Religion M m
Writing-intensive English M m

College of Business Administration

Accounting* M
Business Administration M m
Business Analytics M
Business Economics M
Finance M
Human Resources* M m
Information Systems M m
Innovation and Entrepreneurship M m
International Business M
Marketing M m
Operations & Supply Chain Management M m
Real Estate M

J. William and Mary Diederich College of Communication

Advertising* M m
Communication Studies* M m
Corporate Communication* M
Digital Media (Radio/TV/Film)* M m
Film and Media Studies M
Journalism* M
Public Relations* M m
Theatre Arts* M m

College of Education

Educational Studies M
Elementary/Middle Education M
Middle/Secondary Education M

Opus College of Engineering

Biocomputing* M
Bioelectronics* M
Biomechanics* M
Civil Engineering* M m
Computer Engineering* M m
Construction Engineering* M

Electrical Engineering* M m
Environmental Engineering* M m
Mechanical Engineering* M m

College of Health Sciences

Biomedical Sciences M m
Exercise Physiology M
Medical Laboratory Science M
Speech Pathology & Audiology* M

College of Nursing

Nursing* M

Pre-professional programs

Pre-dentistry
Pre-law
Pre-medicine
Pre-pharmacy

Health Sciences Professional Programs

Athletic Training (master's)
Occupational Therapy (doctoral)
Physical Therapy (doctoral)
Physician Assistant Studies (master's)

Advanced Degree Programs

Learn more at marquette.edu/grad/accelerated-degree-programs.php

* Not available to transfer students

Graduate School and Graduate School of Management

Law School, J.D., L.L.M.

School of Dentistry, D.D.S., M.S.

METRO MILWAUKEE

- 1.5 million people
- 1.5-hour drive from Chicago, Illinois
- On Lake Michigan
- Home to six Fortune 500 company headquarters
- Thousands of opportunities for partnerships with our programs and work experience for our students



APPLY ONLINE

marquette.edu/oie-prospective-students

APPLICATION DEADLINES:

International applications are reviewed on a rolling basis. Priority deadlines for applications and all supporting materials are:

- Fall (August start): **December 1**
- Spring (January start): November 1

Applications received after the deadline will be reviewed as space permits.

REQUIRED APPLICATION MATERIALS:

Academic records

- High school transcripts
- High school external examination records (i.e., IGCSE, IB, WAEC, SPM) if available at the time of application
- College/university transcripts (if applicable)
- SAT or ACT scores are **optional** (not required).

Evidence of English language proficiency

- TOEFL minimum scores – Reading: 18, Listening: 18, Speaking: 20, Writing: 20 (*MyBest* scores are considered)
- IELTS minimum scores – Reading: 6.5, Listening: 6.5, Speaking: 6.5, Writing: 6.0
- Duolingo minimum scores – Overall score 115. Prefer no subscore below 110.
- Other forms of evidence may be considered, such as:
 - Official SAT exam with Evidence-based Reading score of at least 530
 - Official ACT exam with English score of at least 22 and Reading score of at least 18
 - Successful study at a U.S. high school or university (typically at least four semesters of academic classes)

CONDITIONAL ADMISSION

Conditional admission is typically offered when all required application materials are satisfactory except for evidence of English language ability. Study at Marquette University cannot begin until we have satisfactory English evidence.



ANNUAL UNDERGRADUATE EXPENSES 2021–2022

\$44,970 Tuition — Academic Year

ESTIMATED LIVING EXPENSES

Includes housing, food, books, personal expenses and health insurance

\$18,620 Fall and Spring

\$63,590 Estimated Total Expenses

Note: Cost estimates are expected to increase with yearly inflation and program development. Estimated costs for summer living expenses are \$4,420 and do not include summer tuition or books. Additional cost information is available at marquette.edu/central/bursar/.

SCHOLARSHIPS

\$10,000 to \$44,970 per year.

2021 figures. Awards subject to change.

Learn more at marquette.edu/oie/prospective-students/scholarships.php

ON-CAMPUS WORK

\$3,200 Estimated earnings

Based on 15 work hours a week during academic year. On-campus work is not guaranteed.

INTERNSHIPS AND CO-OPS

Many academic programs offer internship opportunities as part of their course work. Most of these internships and co-ops are open to international students. marquette.edu/oie/prospective-students/internships.php

QUICK LINKS:
marquette.edu/oie

marquette.university-tour

Online application:
marquette.edu/oie-prospective-students

International Student Ambassadors:
marquette.edu/oie/ambassadors.shtml



**Office of International Education
Marquette University**

1324 W. Wisconsin Ave.
Milwaukee, WI 53233
USA

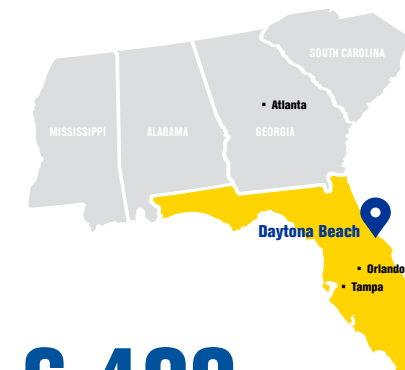
Phone: +1 414.288.7289
world@marquette.edu

FIND YOUR FIT.

Our residential campuses in Florida and Arizona offer small, hands-on classes, vibrant student life and a highly focused learning environment to help you soar to success. No matter which location you choose, you're sure to find a home at Embry-Riddle.

FLORIDA CAMPUS

Looking for palm trees and beautiful beaches?



6,400

Undergraduate Students

50 states / 107 countries represented
200+ clubs and organizations
20 athletic teams

Popular Programs

- Aerospace Engineering
- Aeronautical Science
- Mechanical Engineering
- Business
- Aviation Maintenance Science

Campus Hangouts

- Flight observation deck
- Student Union game lounge
- Hunt Library
- Starbucks

Off-campus Adventures

- Surf at local beaches
- Visit Daytona International Speedway
- Explore Florida's theme parks
- Skydive in Deland

Unique Labs and Facilities

- John Mica Engineering and Aerospace Innovation Complex (MicaPlex)
- Spacesuit Utilization of Innovative Technology (S.U.I.T.) Lab
- Astrophysics Lab

Explore Our Award-Winning Online Programs

Ranked No. 1 in the nation for Best Online Bachelor's Programs, our Worldwide and Online Campus provides the flexibility and convenience to study anywhere.

ARIZONA CAMPUS

Maybe a gorgeous mountain community is your scene?



3,000

Undergraduate Students

50 states / 43 countries represented
190+ clubs and organizations
14 athletic teams

Popular Programs

- Aerospace Engineering
- Aeronautical Science
- Global Security and Intelligence Studies
- Mechanical Engineering
- Cyber Intelligence and Security

Campus Hangouts

- Remote control airfield
- Student Union
- The Quad
- Scholars Café in Hazy Library

Off-campus Adventures

- Hike Thumb Butte
- Explore Downtown Prescott
- Kayak the Verde River
- Visit national parks

Unique Labs and Facilities

- Forensic Science Lab
- Crash Lab
- Propulsion Lab and Rocket Test Complex

EMBRY-RIDDLE
Aeronautical University

HELLO, INTERNATIONAL STUDENTS!

The University of California, Riverside (UCR) is one of the world's finest institutions of higher learning. As a member of the prestigious University of California, we offer a world-class education, knowledgeable professors, and significant undergraduate research opportunities.

We are also known as an extremely friendly and welcoming university. We have programs available to ease your transition to college life, and we look forward to introducing you to the fun and excitement of sunny California!

Our campus has a tradition and history that will make you proud and a future to which you will want to contribute. Your journey to success begins at UC Riverside.

Chancellor Kim Wilcox

International Students and Scholars (ISS) Office

UCR's ISS Office welcomes students and scholars from over 87 countries. It offers a safe environment in which you can receive support and advising, as well as participate in fun events, intercultural programs and discussion groups. ISS offers information on the following:

- International Student Orientation
- Visa matters including i-20 issues
- U.S. entry
- Transferring F-1/J-1 status from another U.S. school

- Employment options
- Academic information
- Course registration
- Health matters
- Housing
- Leadership opportunities
- Student organizations
- Cultural adjustment
- International friendships
- Classroom culture
- Money matters
- Taxes
- Support services
- Cultural and educational programs

international.ucr.edu

Get Connected

Make new friends and get involved on campus with over 500 student organizations, including:

- Armenian Student Association
- Bangladeshi Students Association
- Chinese Students and Scholars Association
- Chinese Union
- Indian Student Association
- International Student Union
- Iranian Student Association
- Middle Eastern Student Assembly
- Nigerian Student Association
- Nikkei Student Union

- South Asian Federation
- Vietnamese Student Association

highlanderlink.ucr.edu

Spend time in one of our eight professionally staffed Ethnic & Gender Programs offices:

- African Student Programs
- Asian Pacific Student Programs
- Chicano Student Programs
- LGBT Resource Center
- Middle Eastern Student Center
- Native American Student Programs
- Undocumented Student Programs
- Women's Resource Center

deanofstudents.ucr.edu/diversity

UNDERGRADUATE MAJORS

Explore majors and minors at UCR: admissions.ucr.edu/majors

MARLAN AND ROSEMARY BOURNS COLLEGE OF ENGINEERING

- Bioengineering **T**
- Chemical Engineering **T**
- Computer Engineering **T**
- Computer Science and Engineering **M T**
- Computer Science and Business Applications **T**
- Data Science **M**
- Electrical Engineering **T**
- Environmental Engineering **T**
- Materials Science and Engineering **T**
- Mechanical Engineering **T**

Combined B.S. plus M.S. five-year programs are offered in Bioengineering, Chemical Engineering, Computer Engineering, Computer Science, Electrical Engineering, Environmental Engineering and Mechanical Engineering. A combined B.S. Computer Engineering plus M.S. Computer Science five-year program is also offered.

COLLEGE OF HUMANITIES, ARTS, AND SOCIAL SCIENCES

- African American Studies **M**
- Anthropology **M**
- Art (Studio)
- Art History **M**
- Art History/Administrative Studies
- Art History/Religious Studies
- Asian Studies **M**
- Asian American Studies **M**
- Business Economics
- Chicano Studies **M**
- Creative Writing **M**
- Dance **M**
- Economics **M**
- Economics/Administrative Studies
- English **M**
- Ethnic Studies **M**
- Gender and Sexuality Studies **M**
- Global Studies **M**
- History **M**
- History/Administrative Studies

- Languages and Literatures
 - Chinese **M**
 - Classical Studies **M**
 - Comparative Ancient Civilizations
 - Comparative Literature
 - French **M**
 - Germanic Studies **M**
 - Japanese **M**
 - Russian Studies **M**
- Latin American Studies **M**
- Liberal Studies
- Linguistics
- Media and Cultural Studies **M**
- Middle East and Islamic Studies **M**
- Music **M**
- Music and Culture
- Native American Studies **M**
- Neuroscience **M T**
- Philosophy **M**
- Political Science **M**
- Political Science/Administrative Studies
- Political Science/International Affairs
- Political Science/Public Service
- Pre-Business
- Psychology **M T**
- Religious Studies **M**
- Sociology **M**
- Sociology/Administrative Studies
- Spanish **M**
- Sustainability Studies
- Theatre, Film and Digital Production **M**
- Undeclared Program

COLLEGE OF NATURAL AND AGRICULTURAL SCIENCES

- Biochemistry **T**
- Biology **T**
- Cell, Molecular, and Developmental Biology **T**
- Chemistry **M T**
- Data Science **M**
- Earth Sciences **T**
- Entomology **M T**
- Environmental Sciences **M T**
- Geology **M T**
- Geophysics **T**
- Mathematics **M T**
- Mathematics for Secondary School Teachers **T**
- Microbiology **T**
- Neuroscience **M T**
- Physics **M T**
- Plant Biology **M T**
- Statistics **M T**
- Undeclared

A combined B.S. plus M.S. five-year program is offered in Entomology.

SCHOOL OF BUSINESS

- Business Administration **M T**

You can specialize in one of the following areas:

- Accounting and Auditing
- Business Analytics
- Finance
- Information Systems
- Management
- Marketing
- Operations and Supply Chain Management

Students are admitted to the Business Administration major after successful completion of a series of prerequisites with the minimum required GPA. Freshman applicants should apply as Pre-Business in the College of Humanities, Arts, and Social Sciences; transfer applicants should apply as Business Administration in the School of Business.

GRADUATE SCHOOL OF EDUCATION

- Education, Society, and Human Development **T**

You can specialize in the following areas:

- Community Leadership, Policy, and Social Justice
- Learning and Behavioral Studies
- Student-Designed Comparative Concentration

SCHOOL OF PUBLIC POLICY

- Public Policy **M T**

You can major or minor in two of six specialized tracks:

- Economic Policy
- Health/Population Policy
- International/Foreign Policy
- Policy Institutions and Processes
- Social/Cultural/Family Policy
- Urban/Environmental Policy

Additional Minors

In addition to the minors listed with their corresponding major, the following minors are also available:

- Applied Statistics
- Global Climate Change
- Journalism
- Labor Studies
- Law and Society
- Lesbian, Gay, Bisexual, Intersex, and Transgender Studies
- Marxist Studies
- Peace and Conflict
- Science Fiction and Technoculture Studies
- Southeast Asian Studies
- Urban Studies
- Western American Studies

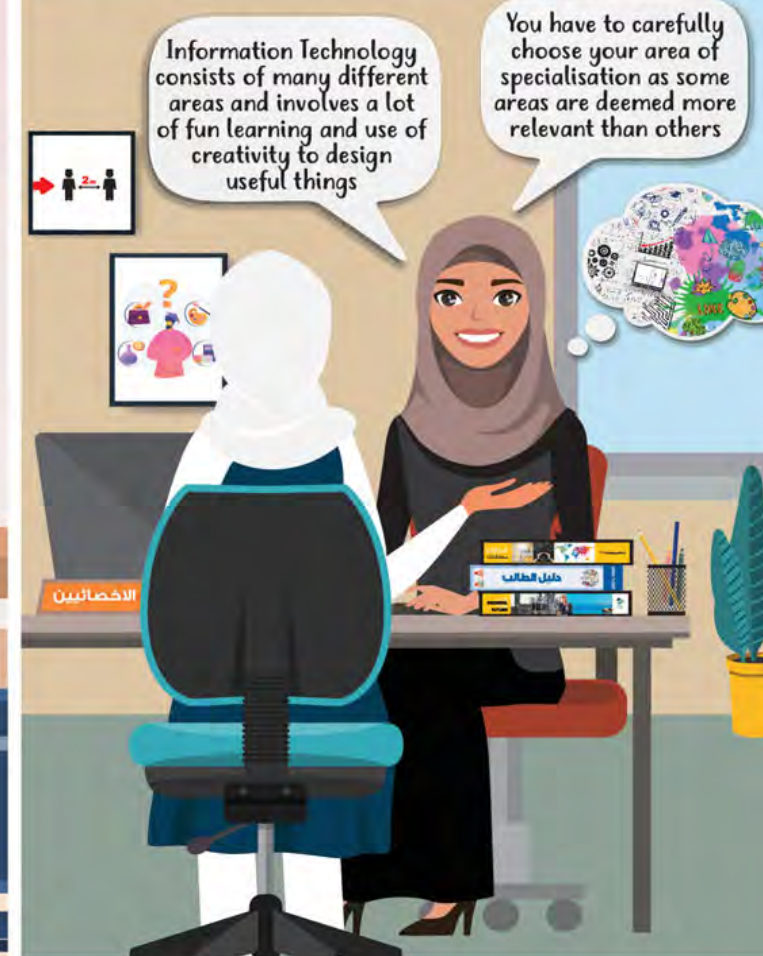
M = Academic minors are also available for these majors.

T = Transfer Selecting major. If applying as a transfer student, specific, prerequisite courses must be completed.

WHAT I USED TO THINK ABOUT STUDYING INFORMATION TECHNOLOGY (IT):



WHAT I KNOW NOW ABOUT INFORMATION TECHNOLOGY (IT):



WHAT I THOUGHT IT WOULD BE LIKE TO WORK IN THE TOURISM SECTOR:



WHAT IT IS REALLY LIKE TO WORK IN THE TOURISM SECTOR:



MIZZOU

SEEK. SOLVE. SHOW.



COLUMBIA, MISSOURI
THE MIDDLE OF EVERYTHING

CoMo is a lively college town with
tons of fun and exciting things to do

- ✦ Comprehensive program offerings
- ✦ Dedicated Sponsored Student team
- ✦ Take our virtual tour
- ✦ Graduate programs and admission
- ✦ Rolling undergraduate admission

More information here:



University of Missouri



Drexel STEM & ESAM Programs

Drexel is a comprehensive global R1-level research university with a unique model of experiential learning that combines academic rigor with one of the nation's premier cooperative education programs. We welcome Omani students to explore our list of excellent STEM & ESAM undergraduate degree programs!

STEM Degree Programs

College of Engineering

Architectural Engineering, Chemical Engineering, Civil Engineering, Computer Engineering, Electrical Engineering, Engineering Technology, Environmental Engineering, Materials Science, Mechanical Engineering

College of Arts and Sciences

Biological Sciences, Chemistry, Environmental Science, Geoscience, Mathematics, Physics

College of Computing & Informatics

Computing & Security Technology, Data Science, Information Systems, Software Engineering

Other Programs

Health Sciences, Public Health, Biomedical Engineering, Architecture, Real Estate Management and Development, and others



ESAM Degree Programs

Westphal College of Media Arts & Design

Animation & Visual Effects, User Experience & Interaction Design, Digital Media & Virtual Production

LeBow College of Business

Economics, Operations & Supply Chain Management, Real Estate Management & Development

School of Education

Elementary Education, Secondary Education

College of Arts and Sciences

Sociology, Criminology and Justice Studies, and others

Learn more about Drexel

Virtual tour: drexel.edu/admissions/visit-tours

International Admissions: enroll@drexel.edu

Drexel University | 3141 Chestnut St | Philadelphia, PA 19104 | drexel.edu

Study at the University of Kansas



KU ACADEMICS

500+

DEGREES AND CERTIFICATES

Earn your degree. Discover new subjects. Change the world.

ku.edu/academics

50+

RANKED PROGRAMS

Broaden and deepen your education through one of KU's top-ranked graduate programs.

graduate.ku.edu

#1

HONORS PROGRAM

KU is tied for #1 ranked honors program among public universities

Inside Honors

Top 10%

BEST GLOBAL UNIVERSITIES

#284 best global university in the world.

US News & World Report

ABOUT KU

As a major teaching and research university, KU is one of 36 U.S. public institutions in the prestigious Association of American Universities (AAU). Our tuition is lower than tuition at many AAU universities, allowing students like you more affordable access to our nationally ranked programs.

Additionally, our Applied English Center courses cost about one-third less than undergraduate degree courses.

aec.ku.edu



As an institutional member of the Council on Undergraduate Research, KU encourages undergraduate students in all disciplines to pursue research alongside faculty. ugresearch.ku.edu

Sign up for more info!



Notable alumni include CEOs of international corporations, Pulitzer and Nobel Prize winners, renowned scientists, and astronauts.

STUDENT LIFE



28,000

STUDENTS

Not too big, not too small- KU is the ideal size to gain hands-on experience at a major public university.

100+

COUNTRIES REPRESENTED

International Support Services (ISS) supports KU's 1,700 international students every step of their journey from applying all the way to employment.

iss.ku.edu

500+

STUDENT ORGANIZATIONS

Through student organizations, you'll get involved, meet other Jayhawks, and explore countless leadership opportunities.

world.ku.edu/about

24

STUDENT HOUSING SITES

On-campus living at KU includes nine residence halls, 12 scholarship halls, and three student apartment complexes.

housing.ku.edu

ABOUT LAWRENCE

Lawrence, a progressive city of nearly 100,000 in northeast Kansas, consistently rates as a top-10 town. Here, you'll experience a vibrant art scene, live music, celebrated restaurants, sports, and four distinct seasons. Kansas City, only 45 minutes away, is home to major league sports, performance venues, and an international airport.



KU THE UNIVERSITY OF KANSAS

Questions?

International Admissions
world@ku.edu
world.ku.edu

Sponsor Student Support
hazelrogers@ku.edu

Applied English Center
aec@ku.edu
aec.ku.edu

Many photos show KU before the COVID-19 pandemic. For information about how Jayhawks are living, studying, and working on KU campuses this semester, visit protect.ku.edu.

KU is an EO/AA institution. Produced by the Office of Public Affairs, 2020 IA04480

MINNESOTA

FASTFACTS

- Major public research institution
- 150+ undergraduate majors and 200+ graduate and professional degree programs
- 5,102 international students from more than 130 countries
- Total of 52,376 students, including 30,734 undergraduate and 15,947 graduate/professional students
- Professors and alumni have won 26 Nobel Prizes
- 17:1 student to faculty ratio
- More than 496,000 alumni and 80 alumni networks worldwide
- Member of the American Association of Universities and the Big Ten Academic Alliance



GREATREPUTATION

- 10th U.S. public research universities**
Shanghai Ranking of World Universities
- 13th Research spending among public research universities (\$1.04 billion)**
National Science Foundation
- 43rd Top university in the U.S.**
Q.S. World University Rankings
- 55th Best global universities**
U.S. News and World Report
- 86th World University Ranking**
Times Higher Education



UNIVERSITY OF MINNESOTA
Driven to DiscoverSM

intlstudy.umn.edu



1-612-234-7093

GREATLOCATION

- Located in Minneapolis-St. Paul metropolitan area known as the “Twin Cities” (3.7 million people)
- Home of the MSP International Airport
- 16 of the U.S.’s 500 largest businesses are in Minnesota
- Voted “Most Liveable State”



To learn more about any of the majors at the University of Minnesota, visit majors.umn.edu

Carlson School of Management

Accounting
Entrepreneurial Management
Finance
Finance and Risk Management
Insurance
Information Systems
Supply Chain and Operations Management

College of Biological Sciences

Biochemistry
Biology
Ecology, Evolution, and Behavior

College of Design

Architecture
Landscape Architecture

College of Education and Human Development

Early Childhood
Elementary Education
Foundations
Special Education

College of Food, Agricultural, and Natural Resource Sciences

Animal Science
Applied Economics
Environmental Sciences, Policy, and Management
Fisheries, Wildlife, and Conservation Biology
Forest and Natural Resource Management
Sustainable Agriculture and Food Systems
Sustainable Systems Management

College of Liberal Arts

Astrophysics
Biology, Society, and Environment
Chemistry
Computer Science
Developmental Psychology
Earth Sciences
Economics
English
Environmental Geosciences
French Studies
Geography

German, Scandinavian, and Dutch
Italian Studies
Journalism
Linguistics
Mathematics
Media and Information
Medical Lab Sciences

Premajor
Psychology
Russian
Sociology
Sociology of Law, Criminology, and Deviance
Spanish and Portuguese Studies
Spanish Studies
Statistical Practice
Strategic Communication
Urban Studies

College of Science and Engineering

Aerospace Engineering and Mechanics
Astrophysics
Biomedical Engineering
Chemical Engineering
Chemistry

Civil Engineering
Computer Engineering
Computer Science
Data Science
Earth Sciences
Electrical Engineering
Environmental Engineering
Environmental Geosciences
Geoengineering
Industrial and Systems Engineering
Materials Science and Engineering
Mathematics
Mechanical Engineering

Upper-Division Programs
1-2 years completed college coursework required for admission

College of Continuing and Professional Studies

Health and Wellbeing Sciences
Health Services
Management Information Technology
Infrastructure



THE UNIVERSITY OF TULSA

Founded in 1894, The University of Tulsa is Oklahoma's highest ranked private university. It comprises five colleges: Arts & Sciences; Engineering & Natural Sciences; Business; Health Sciences; and Law. Popular majors include mechanical engineering, computer science, nursing, exercise/sports science, psychology and finance. Although TU has fewer than 4,000 students, the university produces more nationally

competitive scholars than all other Oklahoma colleges and universities combined.

TU is widely recognized for the quality and breadth of its science, technology, engineering and math (STEM) programs; in fact, it is among the top 25 in the United States for STEM education. In addition, the petroleum engineering program is ranked third in the country, while TU's cybersecurity offerings are tied with Harvard University's.

With a low faculty-to-student ratio – 11:1 – TU professors are able to get to know their students and provide individualized attention. Across all 112 academic programs, faculty and staff ensure students receive the support and guidance they need to thrive in their studies and beyond. Students can also be paired with peer, faculty and alumni mentors.

By offering liberal arts, professional studies and career support to all students in every program, TU strives to produce well-rounded alumni ready to succeed in their lives and careers. In 2020-21, TU students who earned a bachelor's degree reported an average starting salary of \$68,117.

The university's diverse, inclusive and architecturally beautiful campus is home to students from 45 states and dozens of countries. Beyond the classroom, over 100 student clubs and organizations eagerly welcome new members. Likewise intramural sports, a well-equipped fitness center, on-campus restaurants and community engagement opportunities empower TU students to have fun, get fit, learn new skills and meet friends.



SUCCESS STARTS HERE



- TU is a **Top 75** private research university and the "Best Value" among all Oklahoma universities.
- TU fosters a **diverse campus life** and close connections with top-notch professors.
- Freshmen are assigned a dedicated **student success coach** and a peer mentor to navigate college life.
- TU offers degrees in the fine and performing arts; humanities; social and natural sciences; engineering and technology; business; health care; and law.
- Visit TU in person or **explore the campus virtually** (utulsa.edu/visit).
- Students enjoy an **11-to-1 student-faculty ratio**, and average class size is 13.



APPLY NOW

► utulsa.edu



THE UNIVERSITY OF TULSA

TU is an EEO/AA institution, including disability/veteran.

NEBRASKA: IN THE MIDDLE OF EVERYWHERE.

41,255
STUDENTS
ENROLLED

on the UNL and UNO
campuses in Fall 2018

18
STUDENTS SELECTED
FOR FULBRIGHT AWARDS

during the 2018-19
academic year



BUSINESS



ARCHITECTURE



ENGINEERING

3,652
INTERNATIONAL STUDENTS

studied at UNL and UNO in Fall 2018

139
COUNTRIES

represented in the
Fall 2018 student body



**NATURAL
SCIENCES**



**INFORMATION
TECHNOLOGY**



**PHYSICAL
SCIENCES**

N
global.unl.edu

UNIVERSITY OF
Nebraska

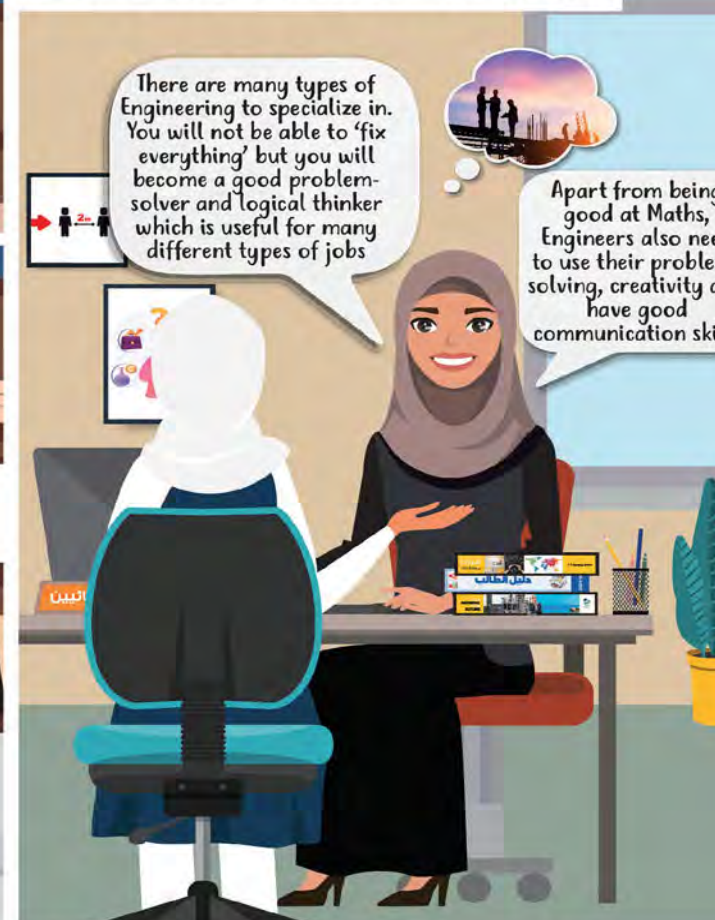

unomaha.edu/admissions

The University of Nebraska does not discriminate based on race, color, ethnicity, national origin, sex, pregnancy, sexual orientation, gender identity, religion, disability, age, genetic information, veteran status, marital status, and/or political affiliation in its programs, activities, or employment. Please see: nebraska.edu/nondiscrimination

WHAT I USED TO THINK ABOUT ENGINEERS:



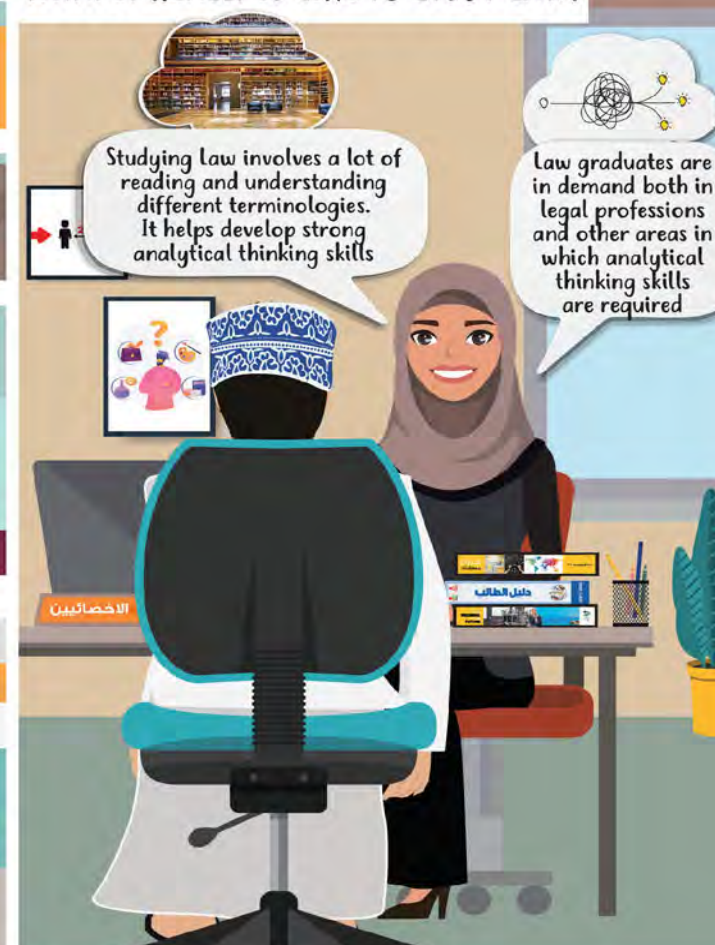
WHAT I KNOW NOW ABOUT ENGINEERS:



WHAT I THOUGHT IT WOULD BE LIKE TO STUDY LAW:



WHAT IT REALLY IS LIKE TO STUDY LAW:



Keep in mind that students wishing to study in the following two schools or any HEI not mentioned in THE list of recommended schools but that has been approved by the Ministry's Department for Equivalency & Recognition, will have to seek proper approvals.

An academic destination where you will find your **Second Home.**



Office of
Global Education



Kent State University is located within the city of Kent, Ohio, which is in the Midwest region of the United States. Situated on the Cuyahoga River, Kent (pop. 28,000) is a small town with tree-lined streets, an abundance of open spaces and lots of fresh air. A short walk from campus, Kent's historic downtown boasts numerous restaurants, shops and stores, as well as a wealth of entertainment venues. The four seasons are evident in Northeast Ohio with temperatures varying from 18.3° to 29.6°C in summer to -6.5° to 2.3°C in winter. Plus, the Northeast Ohio area is also one of the most affordable places to live in the United States.

Safe and Secure Campus
One of the safest campuses in the U.S. as ranked (11th) by the Council for Home Safety and Security.

Globally-Ranked Academics
300 Academic Programs
From the sciences to the arts, over 300 academic programs at the associate, bachelor's, master's and doctoral levels within ten colleges.

A Friendly, Welcoming Community

Financial Assistance
Our new Global Scholarships can save qualifying students upwards of \$16,000 over the course of a 4-year undergraduate degree.

Approved by the Ministry of Education of the Sultan of Oman

Architecture, Urban Planning, Healthcare Design
Aviation, Air Traffic Control and Airport Management
Biological Sciences
Business
Chemistry and Physics
Computer Science and Data Science
Education
Journalism and Media Production
Fashion, Arts and Crafts
Mechatronics and Aerospace Engineering
Translation
Criminal Justice
Public Health, Occupational Health and Safety
Nursing



Iyad | Oman | Energy Systems Engineering



ENGINEER YOUR FUTURE

ACHIEVING A DEGREE WITH LANGUAGE SUPPORT
“The Academic English program here offers a high level of support for students. I remembered when I studied here most of the instructors are willing to help with whatever questions I had. Anything I needed. Most of the students, if not all of them became better at English after the program.” - Iyad

Want to learn more about our Academic English program?
admissions.oregonstate.edu/international

ENERGY SYSTEMS ENGINEERING
The bachelor of science in energy systems engineering combines engineering fundamentals with energy-focused technical courses and business management classes. This multidisciplinary curriculum provides students with a strong foundation in the core principles of mechanical, electrical and industrial engineering.

Courses in energy consumption, distribution, storage, conversion, policy, and business management help prepare students for rewarding technical careers in the broad energy field.

LOOKING FOR A DIFFERENT ENGINEERING FIELD?
At the College of Engineering, we will teach you how to think through tough problems so you can learn to develop innovative solutions. Through real-world engineering experiences, you'll gain first-hand knowledge of what it takes to transform your discoveries into market-ready products. Pick a path in a variety of fields:

- [Biological and Ecological Engineering](#)
- [Chemical, Biological, and Environmental Engineering](#)
- [Civil and Construction Engineering](#)
- [Electrical Engineering and Computer Science](#)
- [Mechanical, Industrial, and Manufacturing Engineering](#)
- [Nuclear Science and Engineering](#)

#58 MOST INNOVATIVE SCHOOL IN THE US
U.S. News & World Report 2021

#88 NATIONALLY RANKED UNIVERSITY
CWUR 2022

#1 SAFEST COLLEGE CAMPUS IN THE US
ADT News & Resources 2018

#63 ENGINEERING IN THE US
U.S. News & World Report 2021

QUESTIONS?
OSU is just a message away: intladmit@oregonstate.edu



OVERVIEW OF ALLOWANCES COVERED BY MOHE EXTERNAL UNDERGRADUATE SCHOLARSHIPS LISTED BY COUNTRY – ACADEMIC YEAR 2022/23*

* THE AMOUNTS MIGHT BE SUBJECT TO CHANGE, PLEASE CONTACT YOUR ADMINISTRATOR ONCE YOU ARE COMPETITIVELY AWARDED AN EXTERNAL SCHOLARSHIP

STUDY DESTINATION	AMOUNT IN FOREIGN CURRENCY, NOT IN OMANI RIALS	MONTHLY LIVING ALLOWANCE*	ANNUAL STUDY ALLOWANCE (BOOKS, CLOTHES....)	TRAVEL ALLOWANCE – PAID ONCE WHEN AWARDED THE SCHOLARSHIP**	ALLOWANCE EQUIPMENT – PAID ONCE	ALLOWANCE FOR EXCESS LUGGAGE – PAID ONCE UPON RETURN TO OMAN
USA	U.S. dollar	1,500	1,155	2,485	1,300	520
UK	Sterling pound	1,015	490	1,638	800	320
AUSTRALIA	Australian dollar	2,000	1,350	3,133	2,210	8,80
NEW ZEALAND	New Zealand Dollar	2,150	1,455	2,749	2,380	950
CANADA	Canadian Dollar	1,600	1,620	2,140	2,000	800
IRELAND FRANCE GERMANY THE NETHERLANDS	Euro	1,500	740	1,490	1,210	490
GCC COUNTRIES	U.S. dollar	875	715	1,752	1,300	520
MALAYSIA	Malaysian Ringgit	2,933	2,467	5,541	4,485	1,794

- **THE MONTHLY LIVING ALLOWANCE COVERS THE ESTIMATED COST OF STUDENT ACCOMMODATION, LOCAL TRANSPORT, FOOD, CLOTHES AND BOOKS DURING YOUR UNDERGRADUATE STUDIES PURSUED ABROAD**
- **THE HEALTH INSURANCE IS ALSO COVERED BY YOUR SCHOLARSHIP AND PAID FOR SEPARATELY (NOT PART OF THE ABOVE MENTIONED ALLOWANCES)**
- **THE TRAVEL ALLOWANCE IS EITHER A LUMP SUM OR AN AMOUNT PAID ONLY ONCE AND THE AMOUNT IS BASED ON THE ESTIMATED COSTS ASSOCIATED WITH THE FOLLOWING (IT IS UP TO YOU HOW YOU SPEND IT)**
- **VISA APPLICATION COSTS** – The Ministry will provide you with information on how to apply for a visa but cannot and will not apply for a visa on behalf of students.

Should you decide to make use of an office for higher education services to help you, you will have to pay for their service fees from this allowance as well.

- **REIMBURSEMENT FEES FOR TWO ENGLISH LANGUAGE PROFICIENCY TESTS (E.G. IELTS)** – As mentioned in the HEAC scholarship application handbook, we advise all external scholarship students to take the IELTS for UKVI exam. We also advise you to take the test now and not wait until August to avoid delays in view of placement procedures. Those awarded a scholarship will be paid the travel allowance, which is meant to also cover the costs of at least two of English language tests.
- **AIRPORT TRANSFER UPON ARRIVAL** – In case this is required.
- **HOTEL ACCOMMODATION DURING FIRST FEW DAYS IN COUNTRY** – If necessary.

THE IMPORTANCE OF FINANCIAL PLANNING FOR STUDENTS

Financial planning is essential in view of the sustainability, growth, and prosperity of governments, organisations, and individuals alike. For university and college students, who have just left the nest, financial planning can be a daunting task as you may still lack the skills to independently and appropriately manage your money while pursuing your higher undergraduate studies.

Therefore, you need to be aware of the importance of financial planning and control your spending as this will lower your stress levels over money concerns. I would like to give some tips to our students on managing your money while you are at University or College.

THE MONTHLY ALLOWANCE FOR EXTERNAL UNDERGRADUATE SCHOLARSHIP STUDENTS

It is worth mentioning that the Ministry has conducted a thorough and detailed market study and took many aspects into consideration before setting the monthly allowance for (external scholarship) students. Provided students manage their budgets properly, the allowance is more than sufficient to help students with their living expenses while studying abroad. Therefore, dear students, I ask you to make sure you always cover all necessary or basic needs expenses and budget your monthly spending accordingly.

START SAVING MONEY

You should start saving money by putting aside a fixed amount every month in anticipation of any unforeseen circumstances. Overspending due to unforeseen circumstances could result in an inability to cover the aforementioned basic needs expenses.

AVOID UNNECESSARY SPENDING ON LUXURIES

Unnecessary spending on luxuries should be controlled and reduced. These luxuries include, for example, all entertainment e.g. going to the movies or dining out. You should set a limit on how much money you spend on luxuries and make sure the spending stays within the limits.

Best of luck and Godspeed to all of you!

SET FINANCIAL PRIORITIES: FOCUS ON NECESSITIES

You need to be able to differentiate between necessities and luxuries; necessities include, for example, the rent, utilities, food, transport, and textbooks. These basic needs expenses should be given priority at the time of creating a budget and you should control your spending accordingly.

SET A BUDGET

Students should develop a list of their monthly allowance(s) and expected expenses. Once you set a budget, you should monitor and follow it strictly by making sure the spending stays within the limits.